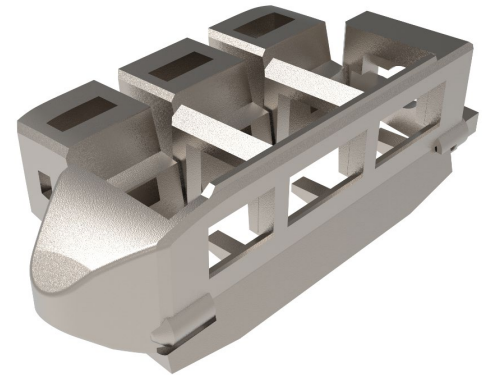
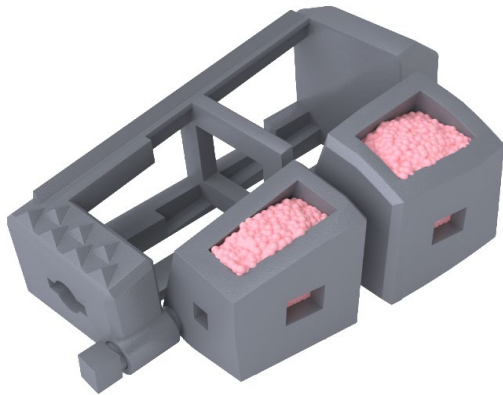


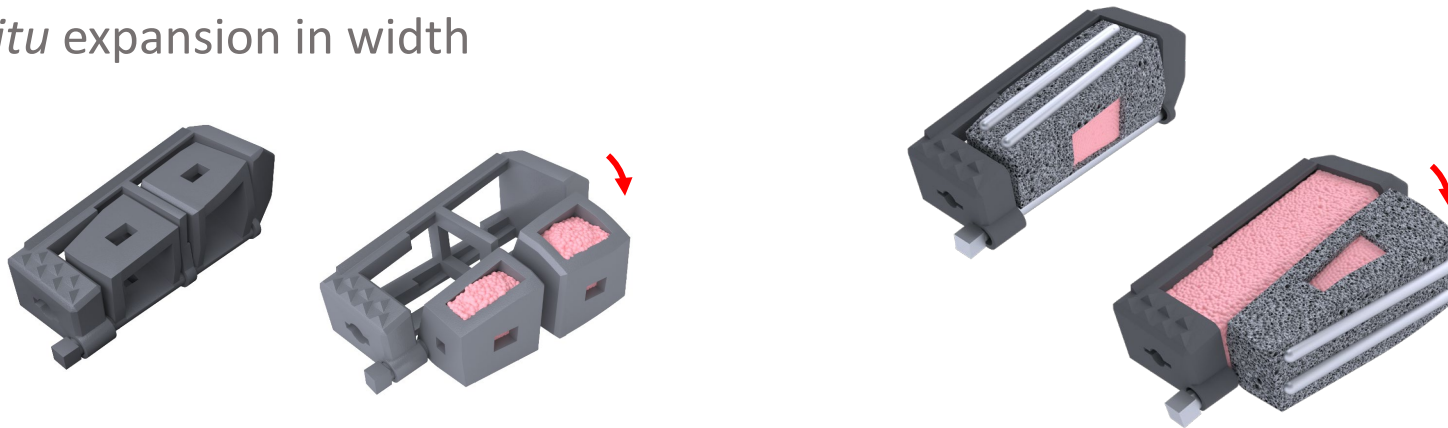
The
ORIGAMI *Classics*
Expandable Cages



Lateral Expansion for Increased Load Sharing

ORIGAMI *Classics* Expandable TLIF Cage

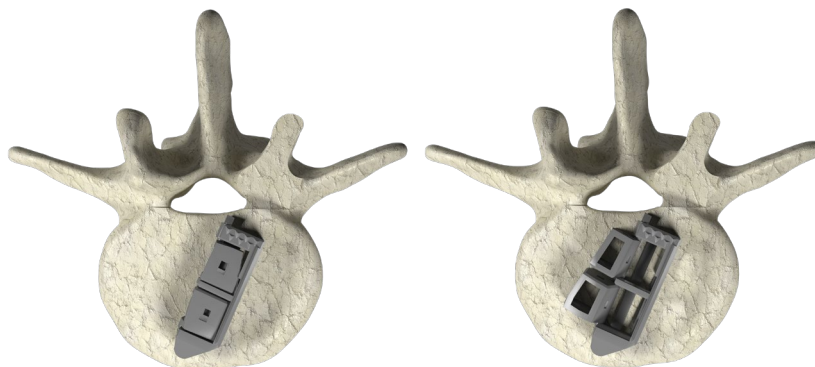
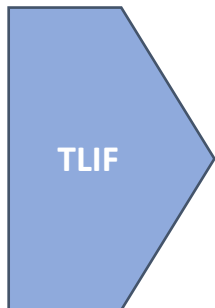
- A classic straight cage for insertion
- *In situ* expansion in width



- Deployment mechanism: <https://www.youtube.com/watch?v=s-1ayDVUs50>

Folded for insertion

Deployed in situ for fusion



- Width = 11mm
- Height (front) = 12mm
- Height (rear) = 8mm
- Width deployed = **17.5 > 20.5mm**
- Angulation (oblique plane) = 14°

ORIGAMI *Classics* for Lateral Approach

- Classic shape for Lateral cage, but narrower width, for less invasive insertion
- Deployment in 2 dimensions: <https://www.youtube.com/watch?v=2iMUXN0andM>
<https://www.youtube.com/watch?v=NM6RY-EjGVQ>
- 3 components

